

Friday 15th May 2026

Long Wittenham C.E. Primary School



Show our love through kindness, determination and curiosity; strengthening ourselves and our community

As we come to the end of SATs week, I would like to take a moment to recognise the incredible hard work, determination and resilience shown by all of the children. They have approached each day with positivity, maturity and a real willingness to try their very best, and we could not be prouder of them. SATs can feel challenging at times, but the children have shown great perseverance and supported one another brilliantly throughout the week. Their efforts, attitude and resilience have truly shone through, and they should all feel very proud of what they have achieved.



On Tuesday in assembly, we discussed the theme of this year's Children's Mental Health Week: "This is My Place." We explored how having a sense of belonging can support our mental health and wellbeing, and the children reflected on the places where they feel they truly belong. This year's theme encourages children, families, schools, and communities to create inclusive environments where every child feels valued and connected. We talked about how feeling part of our family, school, friendships, and wider community can have a positive impact on our mental and physical health, learning, and relationships.

I also challenged the children to think about how we can continue to create a strong sense of belonging in our school, linking our discussions closely to our school value of kindness.

Last week, we also explored our school value of determination as we celebrated the 100th birthday of Sir David Attenborough. We joined a live assembly led by Picture News and reflected on Sir David's lifelong dedication to protecting the natural world. The children were inspired by his perseverance, curiosity, and passion for making a difference, and we discussed how determination can help us achieve our own goals and create positive change in the world around us.



Open Classrooms

Thank you to everyone who was able to attend the open classrooms this afternoon. It was wonderful to welcome so many families into school and to see the children proudly sharing their learning and achievements. We hope you enjoyed spending time in the classroom with your child and gaining an insight into all of the hard work they have been doing this term.

Miss Clarke

Telephone: 01865 407850

Email: office@long-wittenham.school

This Week's Learning

Acorn Class:

This week in Acorn Class, the children have continued to enjoy reading *The Queen's Handbag* and have been using the story as inspiration for creating their own short stories of the king visiting Long-Wittenham! In maths, the children have been revisiting the composition of the numbers 6 to 9 using the "5 and a bit" structure. They have also been exploring the "ten-ness of 10" by creating their own collections of 10 objects. The class has also been very busy writing postcards to one another, practising their writing skills and sharing thoughtful messages with their friends.

Mrs Beeton & Mrs Humphries

Birch Class:

This week in Birch Class, we have continued exploring books by Sam Usher, including *Snow, Sun and Storm*. The children compared the stories and used them as inspiration to plan the opening of their own weather-based stories, showing lots of creativity and imagination. In maths, Year 2 have been learning to tell the time to the hour, quarter past, half past and quarter to, while Year 1 have been learning about fractions and finding half of shapes and quantities. In geography, we compared the uses of the Zambezi River and the River Thames. We also prepared for next week's learning by planning a science experiment and designing our treehouse sculptures in art.

Miss Clarke

Pine Class:

This week, Pine Class have been writing persuasive letters about climate change. Their writing was inspired by their reading of *The Last Bear*, and they explored the impact of melting sea ice on polar bears from the perspective of April Wood, the main character in our class novel. In maths, we have been converting fractions into decimals and learning how to add decimals to make a whole. In geography, we learned about the vibrant city of Rio de Janeiro in Brazil, while in science we explored the different types of seed dispersal. In PE, we have continued to focus on athletics as we prepare for Sports Day.

Mrs McNamee

Oak Class:

Oak Class have had a busy week completing their SATs. In the afternoons, they enjoyed some well-earned downtime, including preparing for Sports Day, taking part in a particularly competitive game of rounders, and baking cakes for the school.

Mrs Greenway and Mr Smith

Attendance Update

Whole school attendance: 96.27%

Congratulations Birch Class 99.29% attendance.

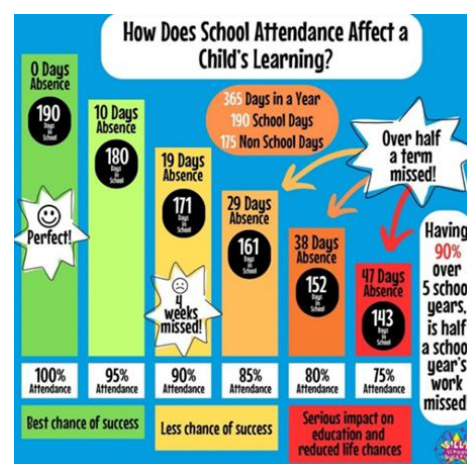
If you are not sure if your child is well enough to come to school please check the following guidance: [Is my child too ill for school? - NHS](#)

Oxfordshire SEND Local Offer

Parents and carers can find comprehensive information about support for children and young people with special educational needs and disabilities (SEND) through the **Oxfordshire SEND Local Offer**. It brings together guidance, services, and resources for ages 0–25, including help with identifying needs, accessing support, and understanding Education, Health and Care Plans (EHCPs). Visit the Local Offer to explore what's available and how to access support: [Oxfordshire SEND local offer | Oxfordshire County Council](#)

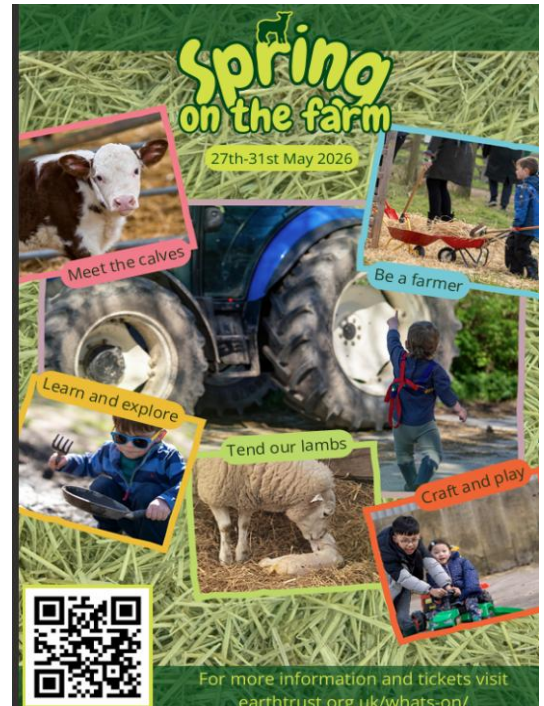
Telephone: 01865 407850

Email: office@long-wittenham.school



This May half term, Earth Trust invites families to Spring on the Farm, a hands-on Springtime adventure for curious young nature explorers. Step into the role of the farmer and help with real jobs on the farm – filling water buckets, topping up hay for the cows, and feeding the sheep. Meet the calves and lambs already thriving on the farm and discover what it takes to care for animals at this busy time of year! Explore the fields and gardens to uncover the minibeasts and wildlife that flourish here, thanks to the nature-friendly way we farm around the Wittenham Clumps.

Spring on the Farm is designed especially for families with children aged 2-8, and makes for a relaxed and joyful alternative to busy holiday attractions. Please click here to learn more about the event.



Your pre-school needs you!

Would you like to be more involved in Pre-School?
Have you considered becoming a Trustee?

We are a committee-run, not-for-profit charity organisation, and can only operate with the support of our Trustees!

Anyone can become a Trustee, and the commitment level can vary depending on how much time you are able to give – let us know if you or someone you know might be interested.

Thank you.

Telephone: 01865 407850

Email: office@long-wittenham.school

Dates for your Diaries 2025-2026	
	Start of Summer Term Bright Sparks Science After School Club (every Monday, 13 th April-18 th May) Forest School for Acorn & Birch Class (every Monday, 13 th April-18 th May)
Wednesday 15 th April	Elite After School Football Club (every Wednesday, 15 th April-15 th July)
Tuesday 19 th May	Sports Day- 10:00am followed by picnic lunch
Wednesday 20 th May	St Birinus & DGS Secondary School Meeting for years 5 & 6 parents 9:00am
Thursday 21 st May	Junior Citizens for Year 6s
Friday 22 nd May	INSET DAY – no pupils
Monday 25 th May to Friday 29 th May	Half Term Break
Monday 1 st June	INSET DAY – no pupils
Week beginning 8 th June	Phonics screening check
Thursday 11 th June	Acorn & Birch Classes – Earth Trust
Wednesday 17 th June	Oak Class – Little Mermaid & Jr
Friday 19 th June	Acorn Class Assembly 3:00pm
Monday 22 nd June	Aureus Rising Y7 SEN Transition Day
Tuesday 30 th June	iRock Concert 2:30pm
Thursday 2 nd July	Rising year 7 transition day at Wallingford
Tuesday 7 th July and Wednesday 8 th July	Rising year 7 transition days at St Birinus, Didcot Girls' and Aureus
Friday 10 th July	Celebration Assembly
Wednesday 15 th July	Oak Class Performance 2pm & 6pm
Friday 17 th July	Year 6 Leavers' church service End of term – break up at 1:30pm