

Friday 17<sup>th</sup> April 2026

## Long Wittenham C.E. Primary School



*Show our love through kindness, determination and curiosity; strengthening ourselves and our community*

Welcome back to the start of a new term. I hope you all had a restful and enjoyable break, and it has been a pleasure to see the children return to school so positively, ready to learn and engage with the term ahead.

In our whole school assembly on Monday, the children reflected thoughtfully on our school value of kindness, with a particular focus on what it means to be kind to ourselves as well as others. It was wonderful to hear them speak so confidently about what kindness looks like in their interactions with others, as well as how they can show kindness in their everyday lives. Kindness is at the heart of school life, shaping the way we learn, interact and care for one another, and helping to build a positive and supportive school community. It has been lovely to see the children living out this value so clearly in school this week. We ended the week by celebrating those who have shown kindness by adding their names to our celebration tree – well done to all the children recognised.



### Parent/Teacher Meetings

We look forward to welcoming you into school for our upcoming parent/teacher meetings. These provide a valuable opportunity to discuss your child's progress, celebrate their achievements, and talk about next steps in their learning. Appointments can still be booked via Arbor. If you are experiencing difficulties with this, please contact the school office.

### Class Overviews

Class overviews for this half term are attached alongside this newsletter. These outline what your child will be learning in each subject and provide a helpful insight into the topics being covered in class. We hope you find these useful in supporting conversations about learning at home. If you have any questions or would like further information, please speak to your child's class teacher.

### Meet our SENDCos – Monday 20th April at 3.30pm

As shared in our final newsletter last term, Mrs Greenway and I will now be sharing the role of SENDCo. We would like to invite you to an informal meeting on Monday 20th April to hear more about this and to ask any questions you may have. We hope to create more regular opportunities for you to meet with us and talk through any questions or concerns you may have about your child's needs, with future dates to follow.

### Site Safety

In order to ensure the safety of children at after school club, both the playground and vehicle gates are closed until 5.30. If you are collecting from after school club, you must enter through the pedestrian gate. The car park is for the use of staff only.

We look forward to a positive and productive term ahead, continuing to work together to support all of our children to achieve their best. As always, please do get in touch via the school office if you have any questions or would like to discuss anything.

### Miss Clarke

Telephone: 01865 407850

Email: [office.3233@long-wittenham.oxon.sch.uk](mailto:office.3233@long-wittenham.oxon.sch.uk)

## This Weeks Learning

### Acorn Class:

Acorn Class have made a wonderful start to the new term. This week, the children have been enjoying the story 'The Journey Home from Grandpa's', using it as inspiration for their learning. In literacy, they have been rewriting the story and sharing their own imaginative journeys, describing what they might see along the way. In maths, the focus has been on ordinality, with the children exploring how numbers to 10 relate to one another. Through practical activities and games, they have been developing their understanding of one more and one less. In PSHE, the children have been learning about relationships, discussing what it means to be a good friend and how to show kindness and respect to others.

Mrs Beeton & Mrs Humphries

### Birch Class:

This week in English, we have read The Vanishing Lake and developed our curiosity as readers by asking thoughtful questions about the text. We also created freeze frames to retell the main events in the story. In maths, we have been counting in 2s, 5s and 10s, and Year 2 have begun learning about fractions. In geography, we started our topic on Zambia by locating it on a map and exploring how we might travel there from the UK. In science, we have been sorting and classifying minibeasts as part of our Microhabitats topic. It has been a wonderful start to the term, with the children demonstrating very positive attitudes across all areas of learning.

Miss Clarke

### Pine Class:

Pine Class have had a good week settling back into school. We have begun our new class novel, The Last Bear, which we will be studying in reading throughout the summer term and using as a stimulus for writing over the next four weeks. In maths, we have started our new unit on time. In science, the children impressed us with their prior knowledge about plants as we begin our topic on plant reproduction. In geography, we are learning about South America, and in PSHE we explored the theme of gender stereotypes. Finally, we have started practising our athletic skills outdoors in PE.

Mrs McNamee

### Oak Class:

Oak Class have returned after Easter very well, and Year 6 have shown lots of enthusiasm for their upcoming SATs. This week, we have been consolidating our understanding of fractions and exploring how to calculate the volume of cubes and cuboids. In geography, we considered where our food comes from and calculated the distance from farm to the UK for some of our favourite foods. In English, we have started reading *Wild Child* and are developing some beautiful language to describe elements of our natural environment. The children have been outside collecting resources, which they then used to generate vocabulary and explore different sentence structures.

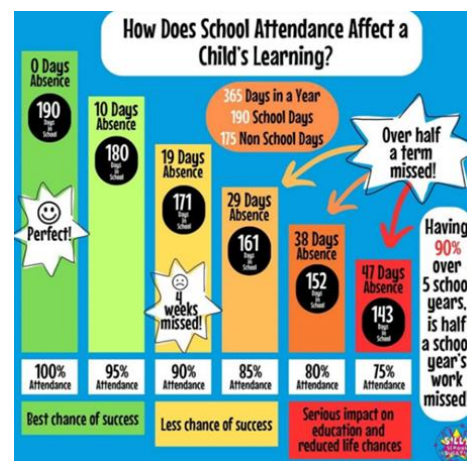
Mrs Greenway

## Attendance Update

Whole school attendance: 96.2%

Congratulations Pine Class – 99% attendance.

If you are not sure if your child is well enough to come to school please check the following guidance: [Is my child too ill for school? - NHS](#)



## Oxfordshire SEND Local Offer

Parents and carers can find comprehensive information about support for children and young people with special educational needs and disabilities (SEND) through the **Oxfordshire SEND Local Offer**. It brings together guidance, services, and resources for ages 0–25, including help with identifying needs, accessing support, and understanding Education, Health and Care Plans (EHCPs). Visit the Local Offer to explore what's available and how to access support: [Oxfordshire SEND Local Offer](#)

| Dates for your Diaries 2025-2026                           |  |
|--|--|
|  | Bright Sparks Science After School Club<br>(every Monday, 13 <sup>th</sup> April-18 <sup>th</sup> May)<br><br>Forest School for Acorn & Birch Class<br>(every Monday, 13 <sup>th</sup> April-18 <sup>th</sup> May) |
|  | Elite After School Football Club<br>(every Wednesday, 15 <sup>th</sup> April-15 <sup>th</sup> July)  |
| Wednesday 22 <sup>nd</sup> April                           | Oak Class – Food & Farming Workshop<br><br>Parents Evening 3:30-5:30pm   |
| Thursday 23 <sup>rd</sup> April                            | Parents Evening 5:00-7:00pm  |
| Friday 24 <sup>th</sup> April                              | Birch Class Assembly 3:00pm  |
| Thursday 30 <sup>th</sup> April                            | School photographer in – class photos and year 6 leavers   |
| Week beginning 11 <sup>th</sup> May                        | SATs Week  |
| Friday 15 <sup>th</sup> May                                | Celebration Assembly 3:00pm  |
| Tuesday 19 <sup>th</sup> May                               | Sports Day- 10:00am followed by picnic lunch   |
| Wednesday 20 <sup>th</sup> May                             | St Birinus & DGS Secondary School Meeting for years 5 & 6 parents 9:00am   |
| Thursday 21 <sup>st</sup> May                              | Junior Citizens for Year 6s  |
| Friday 22 <sup>nd</sup> May                                | INSET DAY – no pupils  |
| Monday 25 <sup>th</sup> May to Friday 29 <sup>th</sup> May | Half Term Break  |
| Monday 1 <sup>st</sup> June                                | INSET DAY – no pupils  |
| Week beginning 8 <sup>th</sup> June                        | Phonics screening check  |
| Wednesday 17 <sup>th</sup> June                            | Oak Class – production at St Helen and St Katharine Lower School   |
| Friday 19 <sup>th</sup> June                               | Acorn Class Assembly 3:00pm  |
| Tuesday 30 <sup>th</sup> June                              | iRock Concert 2:30pm   |
| Thursday 2 <sup>nd</sup> July                              | Rising year 7 transition day at Wallingford  |

|  |   |
|--|---|
| Tuesday 7 <sup>th</sup> and Wednesday 8 <sup>th</sup> July | Rising year 7 transition days at St Birinus, Didcot Girls' and Aureus |
| Friday 10 <sup>th</sup> July                               | Celebration Assembly  |
| Wednesday 15 <sup>th</sup> July                            | Oak Class Performance 2pm & 6pm                                       |
| Friday 17 <sup>th</sup> July                               | Year 6 Leavers' church service<br>End of term – break up at 1:30pm    |