

Friday 13th February

Long Wittenham C.E. Primary School



Show our love through kindness, determination and curiosity; strengthening ourselves and our community

As we come to the end of a busy and rewarding term, we are incredibly proud of the kindness, determination and curiosity shown by our children in all that they do. We have seen this in the way they help one another with their learning, persevere with challenging tasks, and ask thoughtful questions. They are always ready to celebrate each other's successes, whether by congratulating their peers, sharing their achievements, or offering a helping hand when it's needed. It has been lovely to see their positive attitudes contribute to such a calm and supportive learning environment.

We would like to express our heartfelt thanks to Mrs Bowtell for her dedication and the incredible contribution she has made to our school over the years as she embarks on new adventures in retirement. She will be greatly missed, and we wish her all the very best for the future. At the same time, we are delighted to welcome Miss Hinchliffe to our team. She joined us this week and has already begun building positive relationships with the children.

You may be aware that Mrs Fraser is currently absent from school due to illness. I know you will join me in sharing our best wishes with her. During this time, our experienced and supportive team is ensuring continuity across the school, so that learning and school life continue as normal. Should you have any questions or queries, please do not hesitate to contact me.

I hope that you have lovely half term and look forward to welcoming the children back to school on Monday 23rd February.

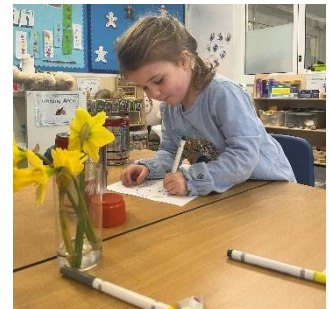
Miss Clarke

This Weeks Learning

Acorn Class:

This week in Acorn Class, we have been putting the finishing touches on our stencil printing artwork, and the children have really enjoyed seeing their designs come together. In Literacy, we have been revisiting this term's stories and sharing them with one another. In Maths, we have been exploring length, height and time. We have also been learning the days of the week and discovering which month each child's birthday falls in, a very exciting discussion for everyone involved!

Mrs Beeton & Mrs Humphries



Birch Class:

It has been a very busy week in Birch Class. In English, we have been reading *Somebody Swallowed Stanley* and writing sentences about caring for our oceans. In Maths, Year 2 have been learning about multiplication and division and are becoming confident with the 2 and 10 times tables. In Geography, we have been sharing what we know about each continent, whilst in Art we have explored the work of Paul Klee using watercolours. In Science, we have been learning about the work of Jane Goodall and her important contribution to our understanding of animals and the natural world.

Miss Clarke

Telephone: 01865 407850

Email: office.3233@long-wittenham.oxon.sch.uk

Pine Class:

Pine Class have had a busy but lovely end to Spring 1. They have been writing diary entries as Marcy from Marcy and the Riddle of the Sphinx. We finished reading our book Krindlekrax and had some great discussions about bravery. In science we finished our unit learning all about sound. In maths we are still learning about fractions and mixed numbers. We have been using water colours in Art to create our final piece based on the poem The Eagle. We researched and wrote some amazing mountain fact-files in geography. Finally, we had a great indoor PE session using the gymnastic climbing bars in the school hall. **Mrs McNamee**

Oak Class:

In Oak Class, the children have completed updated assessments which have shown some great progress. In Maths, we have begun learning about percentages and dividing fractions and integers. In English, the children have been writing journalistic reports based on Camp Green Lake. In Geography, they have explored famous volcanic eruptions, and in Science they have designed and carried out experiments to investigate the effects of exercise on heart rate.

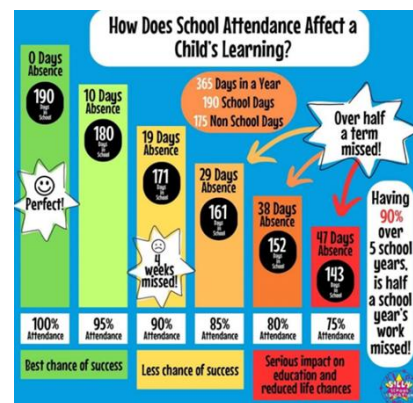
Mrs Greenway

Attendance Update

Whole school attendance: 93.6%

Congratulation Birch Class 93% attendance.

If you are not sure if your child is well enough to come to school please check the following guidance: [Is my child too ill for school? - NHS](#)



World Book Day

We are looking forward to celebrating World Book Day with a special visit from author **Jo Cotterill**, our Patron for Reading. Jo has planned a fantastic day of creative activities, including a whole-school art project inspired by books and stories. As some activities will be hands-on, please ensure children wear clothes they do not mind getting a little messy.

Parking and Safety

For the safety of our community and out of consideration for local residents, please do not use private driveways to turn vehicles around. The school car park is for staff only. We appreciate your cooperation with this request.

Updated list of dates

Please look carefully at the dates below, they have been updated to reflect changes to Friday's assemblies and Forest School.

Telephone: 01865 407850

Email: office.3233@long-wittenham.oxon.sch.uk

Dates for your Diaries 2026	
Monday 23 rd February (until 18 th May)	Forest School for Reception, Years 1 & 2
Friday 27 th February	Pine Class Assembly 3:00pm
Thursday 5 th March	World Book Day
Friday 20 th March	Celebration Assembly
Tuesday 24 th March	Pine Class Performance 2:30pm & 5:30pm
Wednesday 22 nd April	Parents Evening 3:30-5:30pm
Thursday 23 rd April	Parents Evening 5:00-7:00pm
Friday 24 th April	Birch Class Assembly 3:00pm
Week beginning 11 th May	SATs Week
Friday 15 th May	Celebration Assembly
Tuesday 19 th May	Sports Day- 10:00am followed by picnic lunch
Week beginning 8 th June	Phonics screening check
Friday 19 th June	Acorn Class Assembly 3:00pm
Friday 10 th July	Celebration Assembly
Wednesday 15 th July	Oak Class Performance 2pm & 6pm

Telephone: 01865 407850

Email: office.3233@long-wittenham.oxon.sch.uk